



Pittsburgh, PA

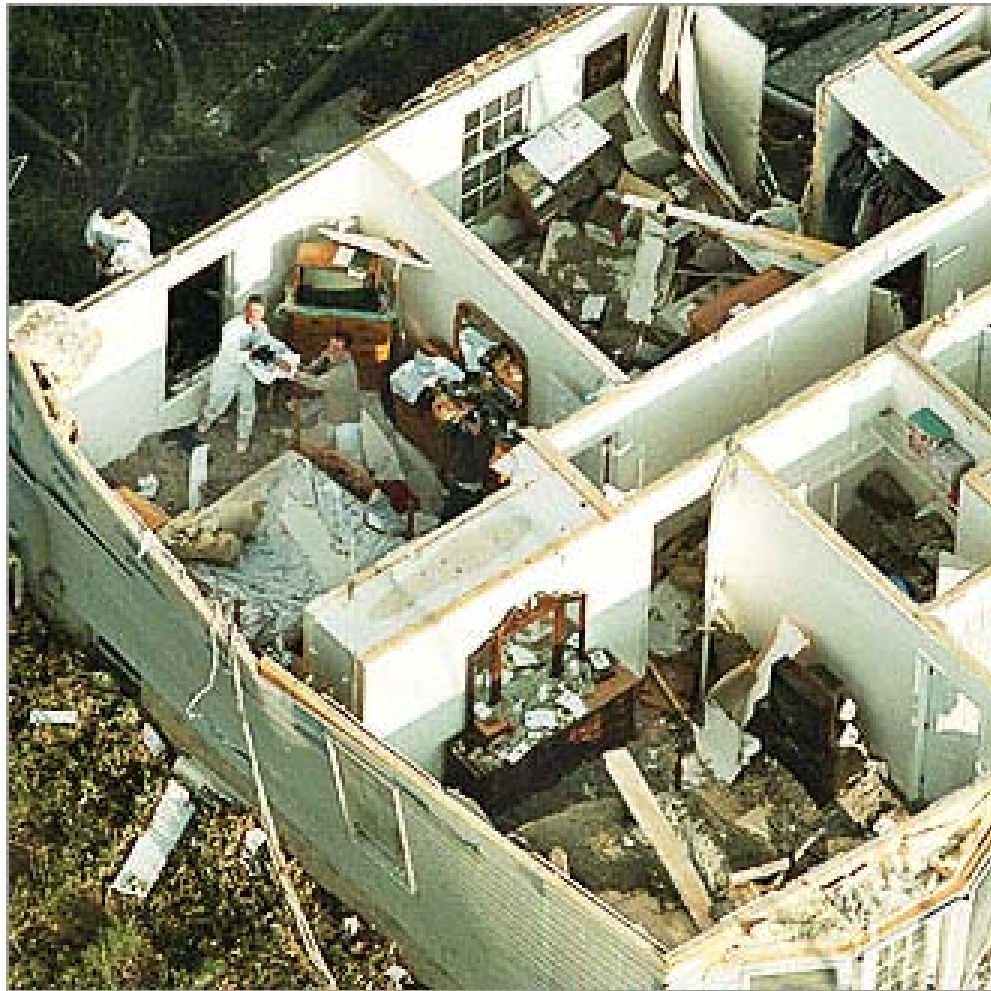


Washington, DC

APRIL 28, 2002

APRIL 28, 2002





APRIL 28, 2002



— Tornado Classification —

- **F0:** Winds less than 73 mph. Light damage. Some damage to chimneys; branches broken off trees; shallow-rooted trees pushed over; sign boards damaged.
 - **F1:** Winds 73 to 112 mph. Moderate damage. Peels surface off roofs; mobile homes pushed off foundations or overturned; moving autos blown off roads.
 - **F2:** Winds 113 to 157 mph. Considerable damage. Roofs torn off frame houses; mobile homes demolished; boxcars overturned; large trees snapped or uprooted; light-object missiles generated; cars lifted off ground.
- **F3:** Winds 158 to 206 mph. Severe damage. Roofs and some walls torn off well-constructed houses; trains overturned; most trees in forest uprooted; heavy cars lifted off the ground and thrown.
- **F4:** Winds 207 to 260 mph. Devastating damage. Well-constructed houses leveled; structures with weak foundations blown away some distance; cars thrown and large missiles generated.
 - **F5:** Winds 261 to 318 mph. Incredible damage. Strong frame houses leveled off foundations and swept away; automobile-sized missiles fly through the air in excess of 100 meters (109 yds); trees debarked;